

House Construction Starts



Start

Groundbreaking (2/23/05)



Safety Training



Footings



6/13/05 Posts



Sheer Wall & Sub Floor



Frames & Walls



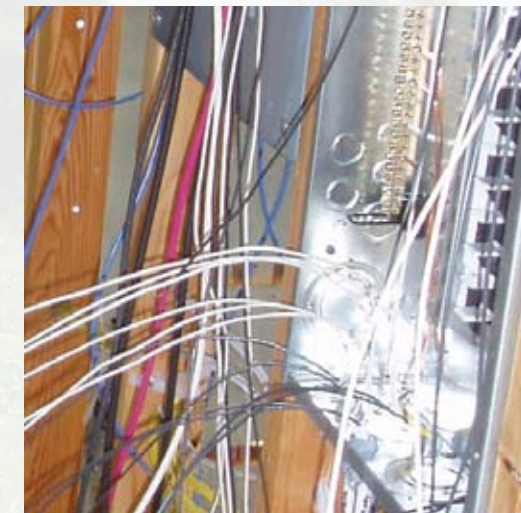
Ribbing



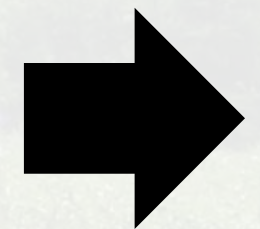
Radiant Floor



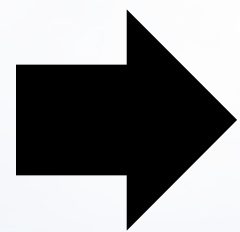
Gypsum Floor



Wiring



House Construction Ends



Insulation



Doors and Windows



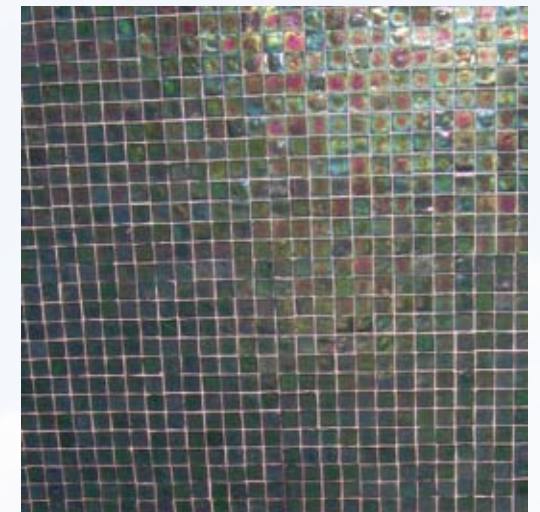
Dry Wall & Painting



Chesapeake Nursery Plants



100% Recycled Glass Tiles



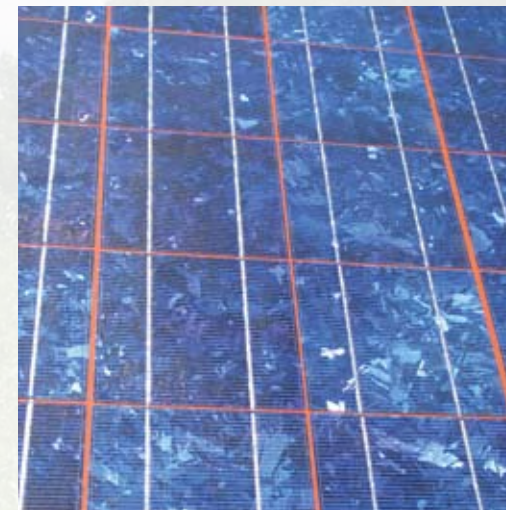
Bamboo & Wheat Board Cabinets



Appliances



Cedar Siding



Solar Panels



Future Home: Red Wiggler Farm

End